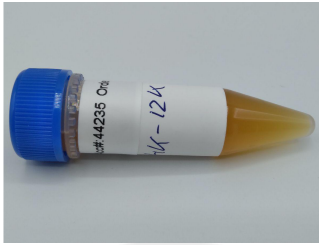


Zelle Farms
 6804 S. York Hwy
 Clarkrange, TN 38553
 christine.nowak@hempuniverse.io
 931-863-5197

Sample: 01-12-2024-44235
 Sample Received: 01/12/2024;
 Report Created: 01/17/2024; Expires: 01/16/2025

Z-FS-4K-12K
 Concentrate & Extracts



0.158 %

Total THC

0.158 %

Δ-9 THC

41.142 %

Total Cannabinoids

40.096 %

Total CBD

Cannabinoids

Complete

(Testing Method: HPLC, CON-P-3000)
 Date Tested: 01/12/2024

Analyte	LOD	LOQ	Mass	Mass	
	%	%	%	mg/g	
Δ-8-Tetrahydrocannabinol (Δ-8 THC)	0.0515	0.0773	ND	ND	
Δ-9-Tetrahydrocannabinol (Δ-9 THC)	0.0515	0.0773	0.158	1.577	
Δ-9-Tetrahydrocannabinolic Acid (THCA-A)	0.0515	0.0773	ND	ND	
Δ-9-Tetrahydrocannabinophorol (Δ-9-THCP)	0.0515	0.0773	ND	ND	
Δ-9-Tetrahydrocannabivarin (Δ-9-THCV)	0.0515	0.0773	ND	ND	
Δ-9-Tetrahydrocannabivarinic Acid (Δ-9-THCVA)	0.0515	0.0773	ND	ND	
R-Δ-10-Tetrahydrocannabinol (R-Δ-10-THC)	0.0515	0.0773	ND	ND	
S-Δ-10-Tetrahydrocannabinol (S-Δ-10-THC)	0.0515	0.0773	ND	ND	
9R-Hexahydrocannabinol (9R-HHC)	0.0515	0.0773	ND	ND	
9S-Hexahydrocannabinol (9S-HHC)	0.0515	0.0773	ND	ND	
Tetrahydrocannabinol Acetate (THCO)	0.0515	0.0773	ND	ND	
Cannabidivarin (CBDV)	0.0515	0.0773	0.154	1.536	
Cannabidivarinic Acid (CBDVA)	0.0515	0.0773	ND	ND	
Cannabidiol (CBD)	0.0515	0.0773	40.096	400.959	
Cannabidiolic Acid (CBDA)	0.0515	0.0773	ND	ND	
Cannabigerol (CBG)	0.0515	0.0773	0.516	5.165	
Cannabigerolic Acid (CBGA)	0.0515	0.0773	ND	ND	
Cannabinol (CBN)	0.0515	0.0773	ND	ND	
Cannabinolic Acid (CBNA)	0.0515	0.0773	ND	ND	
Cannabichromene (CBC)	0.0515	0.0773	0.219	2.186	
Cannabichromenic Acid (CBCA)	0.0515	0.0773	ND	ND	
Total			41.142	411.423	

Total THC = THCa * 0.877 + Δ9-THC; Total CBD = CBDa * 0.877 + CBD; LOQ = Limit of Quantitation; ND = Not Detected.

Total THC Measurement of Uncertainty: ± 0.050%
 Total CBD Measurement of Uncertainty: ± 2.000%
 THCO potency analysis does not designate quantitative specificity of Δ-8-THCO and Δ-9-THCO isomers



New Bloom Labs
 6121 Heritage Park Drive, A500
 Chattanooga, TN 37416
 (844) 837-8223
 TN DEA#: RN0563975
 ANAB Testing Laboratory (AT-2868): ISO/IEC
 17025:2017

Natalie Siracusa
 Natalie Siracusa
 Laboratory Director

Powered by
 reLIMS
 info@relims.com